



*Large storage/ parking yard
on the Nanaimo
Harbourfront.*

OFFERED AT

\$1.60 per Sq Ft

(plus operating expense of
\$0.10 per Sq Ft)

7 Port Drive, Downtown Nanaimo

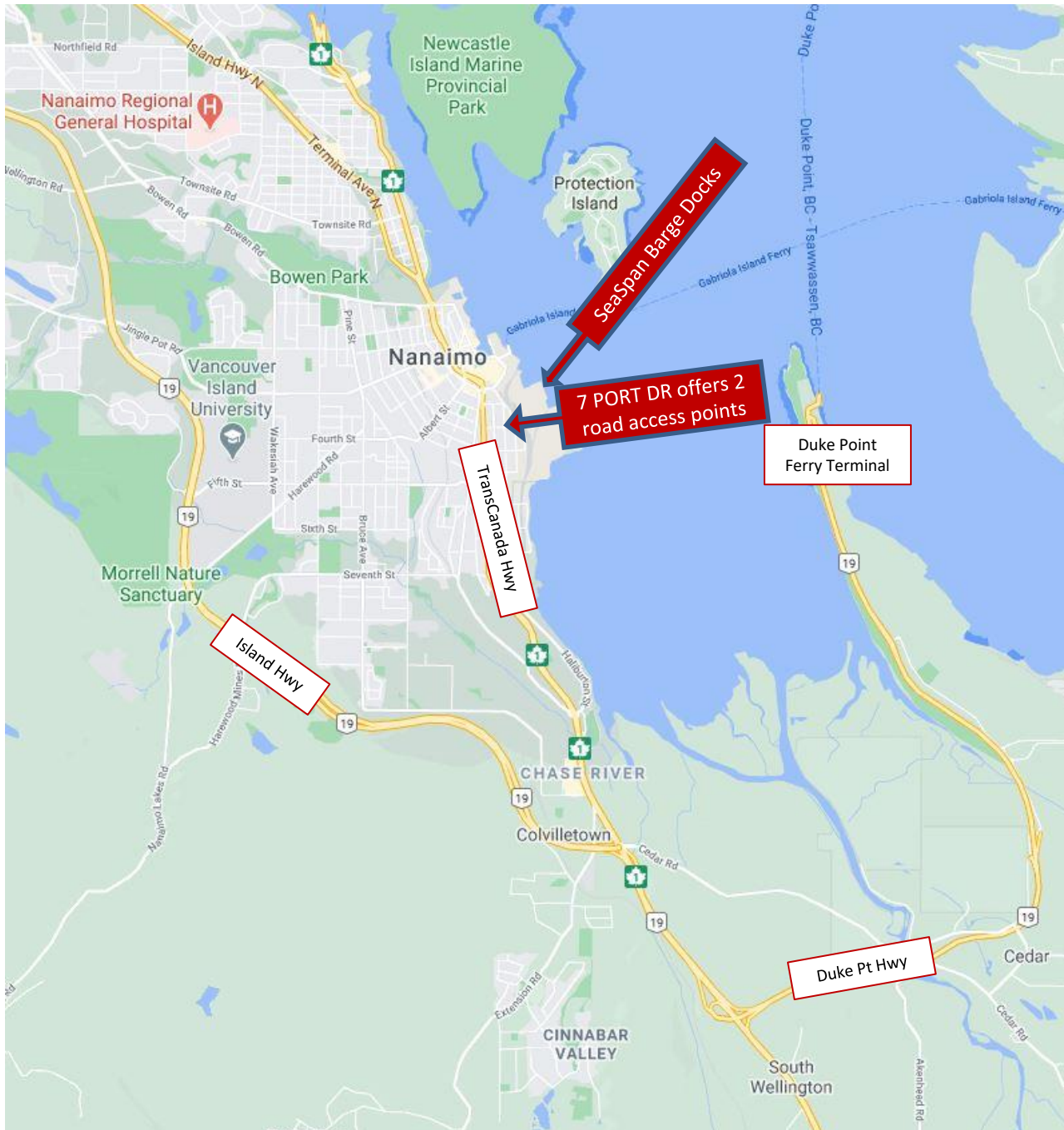
- 1.6 acre (approx.), level and paved yard available for storage or parking of industrial products and equipment. Currently used as tractor-trailer parking.
- The lot is fenced and lighted with a security system in place.
- Located on Port Drive, near the Port of Nanaimo, Southern Vancouver Island Railway yard and in-town Seaspans dock.
- Excellent access via the newly constructed Port Drive.
- Portions of the yard may be leased.

For more information:

Randall Taylor

250-714-4248

rtaylor@naicommercial.ca

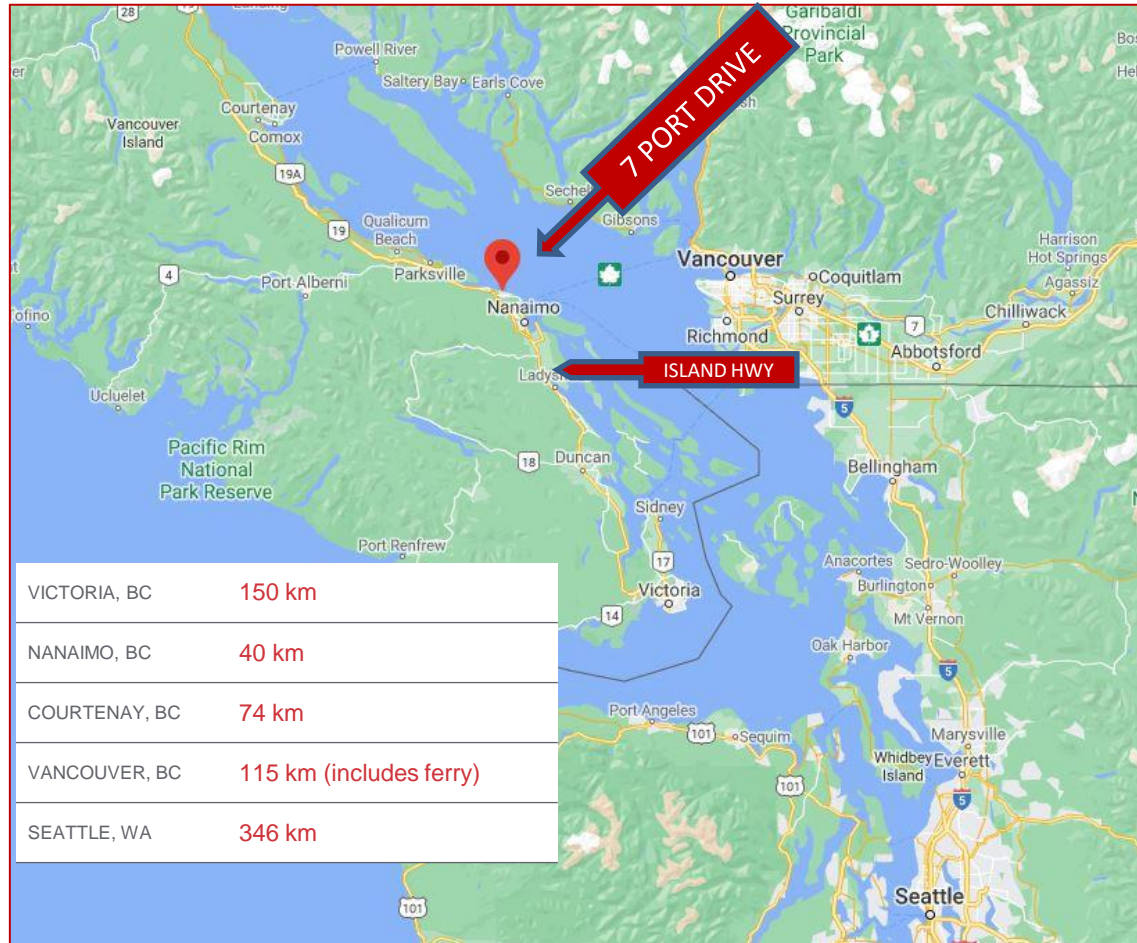


The waterfront industrial area at Port Drive is accessed from the Trans Canada highway (Nicol Street) either along Front St or via the truck overpass at Crace Street.

These roadways provide direct connection throughout Vancouver Island along the Trans-Canada Highway, the Inland Island Highway and access to the mainland with heavy vehicle ferry service at the Duke Point Ferry Terminal.

For Lease

Nanaimo Location Advantages



- Nanaimo is centrally located on the east coast of Vancouver Island, 23km (14 miles) west of Vancouver and 113km (70 miles) north of Victoria and serves as the economic hub for the area.
- Nanaimo is the second largest urban centre on Vancouver Island, and the fifth largest urban centre in British Columbia with a City population of 98,957 with strong growth projections.
- Nestled between the mountains and the ocean, Nanaimo is a 20-minute flight from downtown Vancouver or a 1.5 hour ferry ride with 16 scheduled sailings daily. Air Canada offers direct flights to Vancouver, Calgary and Toronto from the Nanaimo Airport, an all-weather facility. Nanaimo also boasts a Cruise Ship terminal.
- The economic hub of Central and North Vancouver Island, Nanaimo boasts a vibrant business community and exceptional quality of life. Businesses choose to locate in Nanaimo because of the cost efficiencies and a complete range of telecommunications services. The area offers a diversified economic base of 6,233 businesses operating within the City of Nanaimo together with a skilled and motivated workforce, exceptional technological infrastructure, and easy access to world markets.

For more information:

Randall Taylor

250-714-4248 •

rtaylor@naicommercial.ca

NAI Commercial
Central Vancouver Island Ltd.

A 460 GROUP COMPANY

(Credit: Nanaimo Economic Development
– 2020 Community Profile)

2 - 1551 Estevan Road
Nanaimo, BC V9S 3Y3
250.753.5757
naivanisle.ca