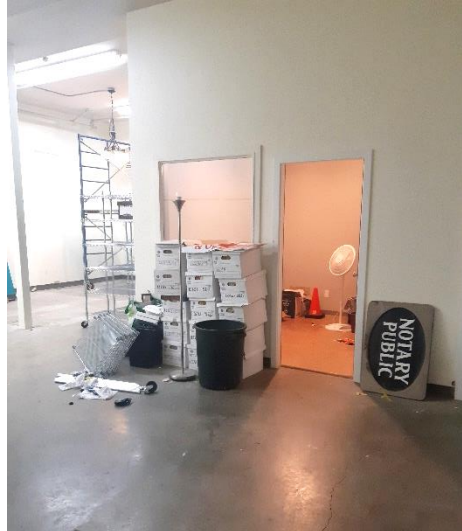


1,344 SF Commercial Space



Unit 101 - 11 Buller Street

Ladysmith, BC

Property Features

- Ground floor 1,344 SF space ideally located in downtown Ladysmith
- Roll up door (6'5" x 9'9"), ground floor office, shared access to washroom and kitchen
- Easy access to Highway 1 in an area of commercial and residential development
- Well maintained building
- C-2 (Commercial 2) Zoning provides for a wide range of uses including, but not limited to: retail sales, convenience store, cultural facility, restaurant, coffee shop, office, personal service, pub, indoor recreation, artist studio, commercial school, media production studio, garden centre, veterinary clinic, animal grooming, repair service, print shop or cottage industry.

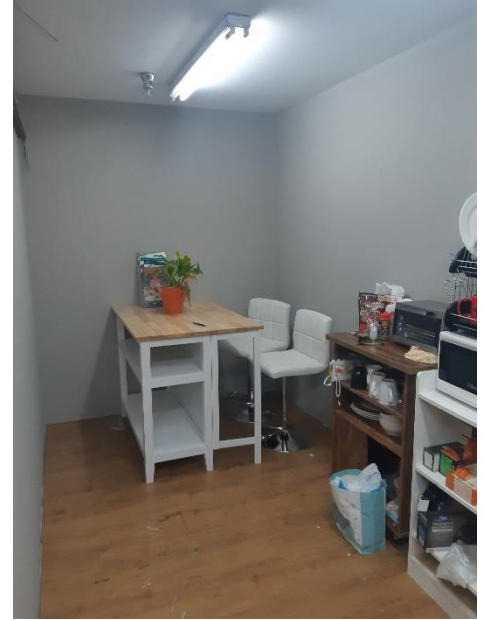
An excellent opportunity to set up your business at a very competitive gross monthly rate!

UNIT 1 (ground floor)	1,344 SF
LEASE RATE	\$1,500 GROSS
ZONING	C-2
OCCUPANCY DATE	Immediately

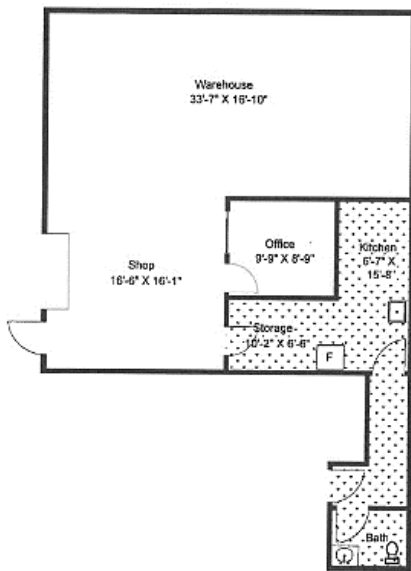
For more information:

John Hankins
250-713-9830 • jhankins@naicommercial.ca

1,344 SF Commercial Space



#101 - 11 Buller Street



Dotted: **Main Space = 1022 sq ft**
Common Space = 322 sq ft
Total Space = 1344 sq ft

Prepared for the Exclusive use of
John Sartore
eXp Realty
as measured on November 15, 2019

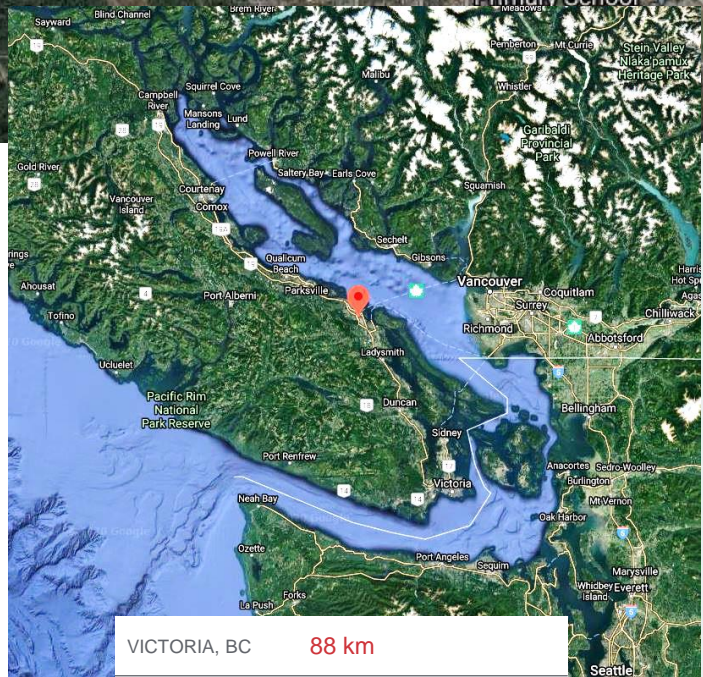
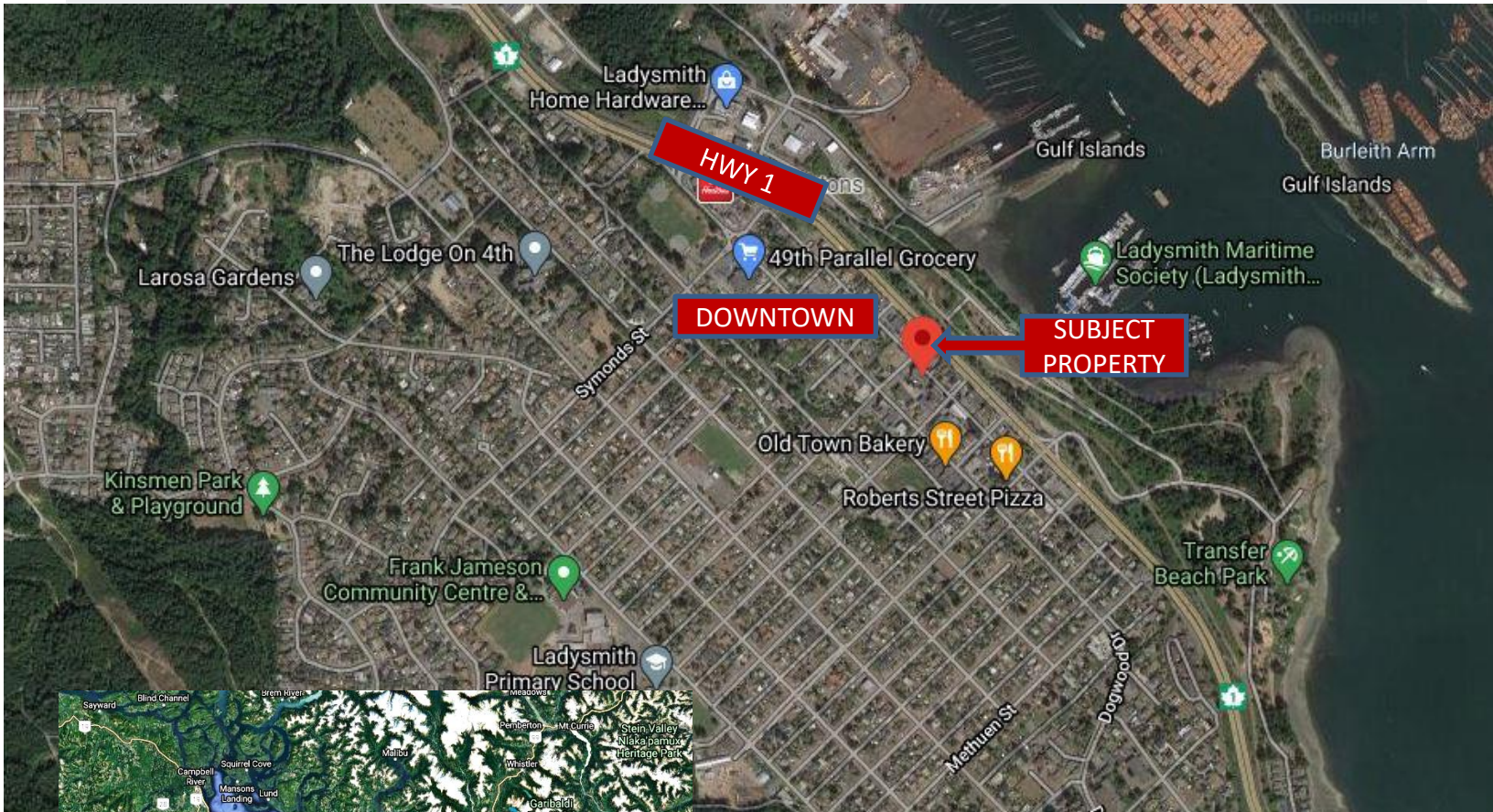
Dimensions as shown are approximate and should be verified

Measurements and Drawing by DCS Builders
Chris Davidson 250.622.2288

NO WARRANTY OR REPRESENTATION, EXPRESS OR IMPLIED, IS MADE AS TO THE ACCURACY OF THE INFORMATION CONTAINED HEREIN, AND THE SAME IS SUBMITTED SUBJECT TO ERRORS, OMISSIONS, CHANGE OF PRICE, RENTAL OR OTHER CONDITIONS, PRIOR SALE, LEASE OR FINANCING, OR WITHDRAWAL WITHOUT NOTICE, AND OF ANY SPECIAL LISTING CONDITIONS IMPOSED BY OUR PRINCIPALS NO WARRANTIES OR REPRESENTATIONS ARE MADE AS TO THE CONDITION OF THE PROPERTY OR ANY HAZARDS CONTAINED THEREIN ARE ANY TO BE IMPLIED.

2 - 1551 Estevan Road
Nanaimo, BC V9S 3Y3
250.753.5757
naivanisle.ca

FOR LEASE



VICTORIA, BC	88 km
NANAIMO, BC	23 km
COURTENAY, BC	131 km
VANCOUVER, BC	103 km (includes ferry)
SEATTLE, WA	291 km

OFFERED FOR LEASE

\$1,500.00 per Month (Gross)

For more information:

John Hankins
250-713-9830 • jhankins@naicommercial.ca